

## Accumetrics

### Business Profile

Accumetric, LLC manufactures, packages and markets adhesives, sealants, lubricants and related products.

### Key Outcomes

Accumetric was able to increase accuracy and automation, and reduce training and packaging time.

### Industry

Adhesive, Sealant and Hand Cleaner

### TrueFit Solution

Developed a wireless solution to manage the assembly process.

## TrueFit Solutions Helps Accumetric Improve Accuracy and Efficiency of Assembling Product Orders

Accumetric, LLC was founded in 1970 in Elizabethtown, Kentucky, and quickly became the premier manufacturer and custom packager of silicone and various adhesives, lubricants and compounds. The ISO 9002-certified company manufactures products or purchases products in bulk from major domestic and foreign suppliers, and packages the products into cartridges, tubes, bottles, cans and other smaller containers. The packaged products are private labeled, or sold nationally and internationally through numerous wholesale distributors under the BOSS® brand name. The distributors market these adhesives, sealants and lubricants primarily to the construction, industrial MRO, HVAC, RV and manufactured housing, building materials, automotive aftermarket, pool and spa, electrical, and electronics industries.

### Business Situation

The Hardec Division of Accumetric LLC handles a wide variety of bulk product for packaging and distribution to thousands of locations worldwide. The existing system was highly manual and cumbersome. The company needed a solution that would be easy to implement and understand. TrueFit was asked to create this solution.

### Solution

TrueFit decided to design and develop a wireless solution using a PDA to manage the assembly process. The platform for this solution included Pocket PC devices and XML Web Services communicating via 802.11B wireless network. Developed using the Microsoft Visual Studio .NET 2003 platform, this application greatly improves efficiency of order assembly and shipment.

Employees performing the order assembly process are first directed to log on to the system and indicate the zone in which they are currently located. Upon successful log in, the system provides the employee with a customer order and directs the employee to the location of the product closest to the zone where they are currently located. The employee scans the UPC code of the item and indicates to the system the completion of the assembly of the order item by pressing the "Enter" button.

The employee is then directed to the next product location on the order closest to their current location. The system tracks the amount of ordered product by location and informs the employee of the amount already assembled and the total products needed in each location.



## Business Profile

Accumetric, LLC manufactures, packages and markets adhesives, sealants, lubricants and related products.

## Key Outcomes

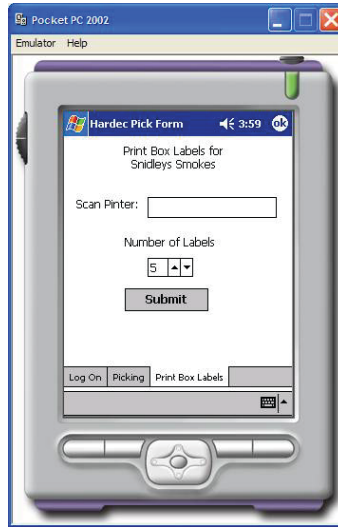
Accumetric was able to increase accuracy and automation, and reduce training and packaging time.

## Industry

Adhesive, Sealant and Hand Cleaner

## TrueFit Solution

Developed a wireless solution to manage the assembly process.



As the assembly process progresses, the employee may request order tacking labels to be printed to be affixed to assembly boxes. This is accomplished using the display shown to the left.

Upon completion of the order assembly, the system automatically creates the shipping and invoice documents for delivery with the order. The employee is then assigned another order to assemble and the process is repeated.

## Benefits

Accumetrics organization receives the following benefits:

- **Improved Accuracy** - The solution ensures that the correct product is selected for packaging among a large variety of items with sometimes very subtle differences.
- **Reduced Training Time** - The solution has clear instructions for each step of the process, making it easy to hire new personnel and enable them to be productive with minimal training. This also minimizes costs related to employee turnover.
- **Automation** - The selection and packaging process has been automated from the instructions for selection to the printing of packing slips and invoices, all from the PDA.
- **Reduced Packaging Time** - The amount of time needed to inspect the packages has been decreased since the accuracy of product selection has been greatly increased.

## About TrueFit

TrueFit combines inspiration and collaboration to create technology solutions that truly fit a company's needs and enable that organization to work better, faster and smarter. Our technology solutions are business solutions that empower individuals and organizations to be more flexible, agile and responsive. TrueFit partners with companies and organizations in manufacturing, distribution, health care, financial services, professional services, and a host of other industries and professions. Founded in 1997, TrueFit is headquartered in Pittsburgh, PA. For more information, visit [www.truefitsolutions.com](http://www.truefitsolutions.com).